



## RIVERVIEWTOWNES



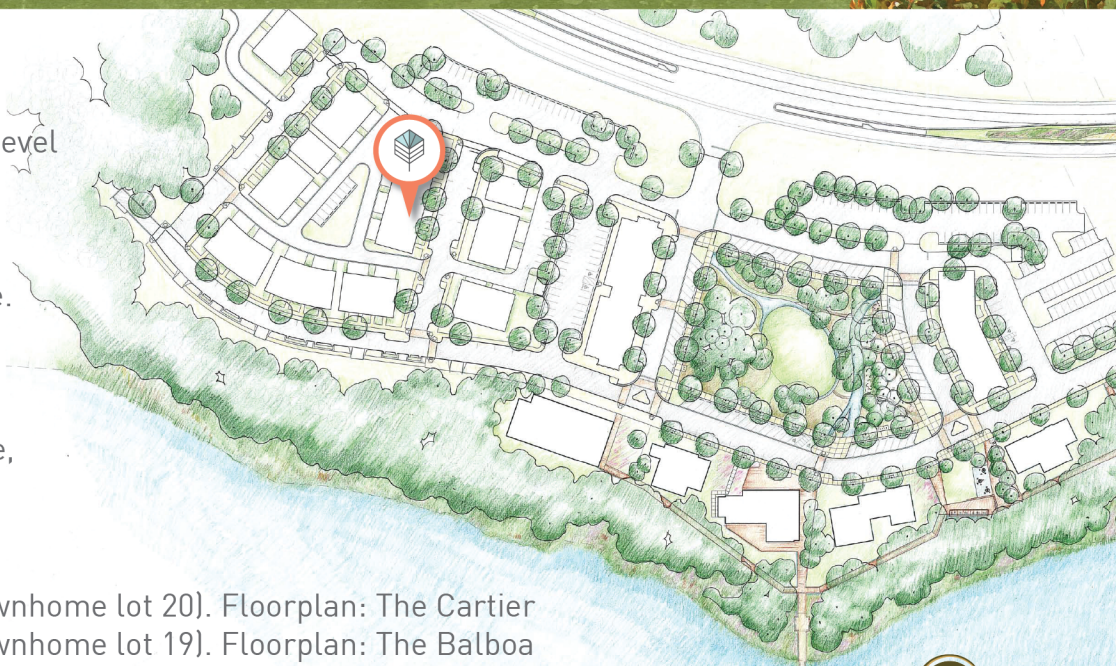
### RIVERVIEWTOWNES

will include three & four-level townhomes that perfectly showcase PBC's clean design and sophisticated architecture.

Riverview Townes is located within the RiverLights Marina Village, adjacent to shops and the marina.



17 Hobie Run (townhome lot 20). Floorplan: The Cartier  
19 Hobie Run (townhome lot 19). Floorplan: The Balboa  
21 Hobie Run (townhome lot 18). Floorplan: The Drake  
3539 Watercraft Ferry (townhome lot 27): The Drake



RIVERLIGHTS

**PBC**

DESIGN  
+ BUILD



THRESHOLD  
REALTY CORP

**Call Today 252.241.5978**

[www.pbcriverviewtownes.com](http://www.pbcriverviewtownes.com)



## 21 Hobie Run (townhome lot 18)



GROUND FLOOR

FIRST FLOOR

SECOND FLOOR

## THE DRAKE

\$459,900

2 Bedrooms and  
Gathering Room

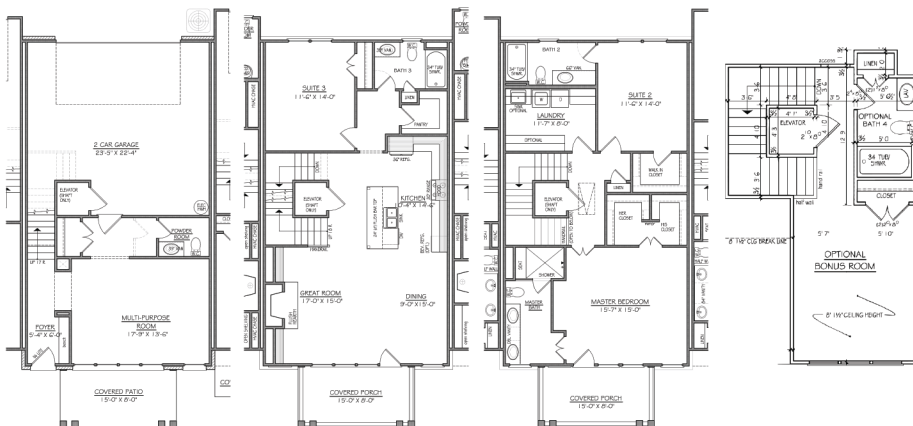
2 Full Baths, 2 Half Baths

Main Level Porch

2139 Heated Sq. Feet

The Drake features a large spacious kitchen with center island, gas range & large walk-in pantry, offering all luxurious, high-end details and finishes. Two suites with their own private baths are located on the uppermost level with one bath offering dual vanities, and a walk-in shower with bench. Enjoy plenty of storage and walk-in laundry room, as well as a fireplace with built-ins on both sides and an elevator. This home is finished off with a 2 car garage and gathering room with 1/2 bath on the ground level.

## 19 Hobie Run (townhome lot 19)



GROUND FLOOR

FIRST FLOOR

SECOND FLOOR

FOURTH FLOOR

## THE BALBOA

\$542,900

3 Bedrooms

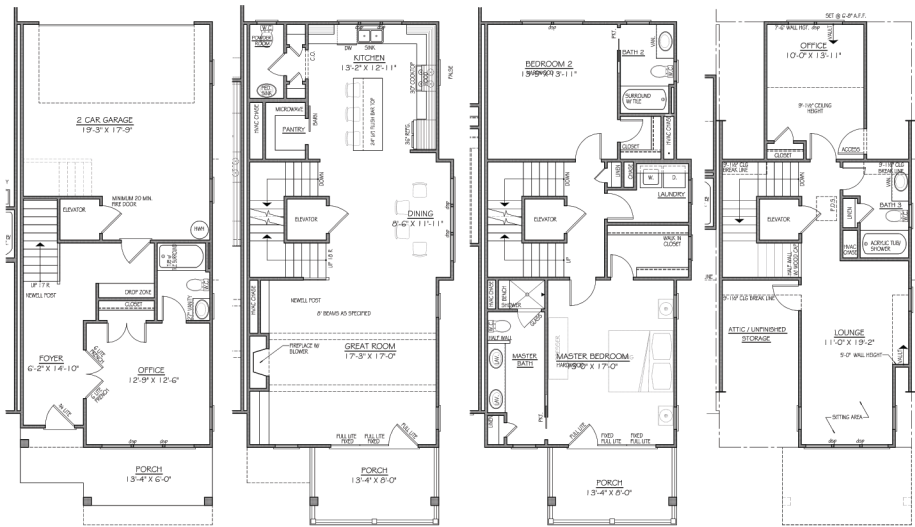
4 Full Baths, 1 Half Bath

2 Oversized Balconies

2,929 Heated Sq. Feet

The Balboa plan is a stunning 4-story townhome with an expansive 2,929 sqft. Showcasing 3 bedrooms all with their own en-suites, there is also an additional gathering room and half bath on the ground floor to provide opportunity for dual entertainment as well as an open, airy loft with bath on the uppermost floor that would suit any artist's or avid reader's desire. Additional features include an open living area, natural gas for cooking, and two oversized balconies.

3539 Watercraft Ferry (townhome lot 27)



GROUND FLOOR

FIRST FLOOR

SECOND FLOOR

FOURTH FLOOR

## THE DRAKE<sup>W/ 4TH LEVEL</sup>

\$679,900

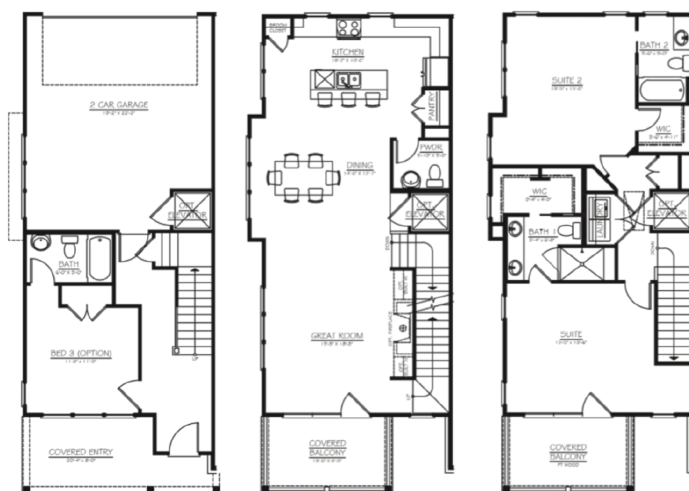
3 Bedrooms, Office & Loft

4 Full Baths, 1 Half Bath

2681 Heated Sq. Feet

The Drake is a versatile 4-story riverfront townhome. The main level features a large, spacious kitchen with a center island, natural gas appliances, walk in pantry, fireplace with built ins on both sides. Opening up to the main living space, it extends out onto the outdoor balcony that provides views of the Cape Fear River. Each additional level provides its own private owner suite, with the master bedroom extending out onto its own covered porch. The uppermost level features an additional loft area. Elevator shaft is installed, addition is optional.

17 Hobie Run (townhome lot 20)



GROUND FLOOR

FIRST FLOOR

SECOND FLOOR

## THE CARTIER

\$459,900

3 Bedrooms

3 Full Baths

Main and Bedroom Level Porches

2136 Heated Sq. Feet

The Cartier features a large spacious kitchen with center island, gas range & pantry. A perfect combination of living, dining, and outdoor space, with 2 covered balconies, this townhome offers living spaces inside and outside your home. Two suites with their own private baths are located on the uppermost level with one bath offering dual vanities and a walk-in shower with bench. This home is finished off with a 2 car garage and one more bedroom with a private bath on the ground level.



**RIVERVIEWTOWNES**

**Call Casey Today 252.241.5978**