

LOT 9 HELMS PORT

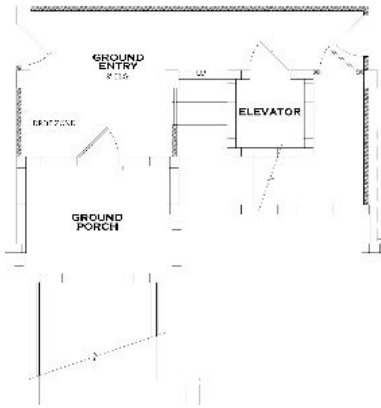
4042 Square Feet | 4 Bedrooms | 4.5 Baths



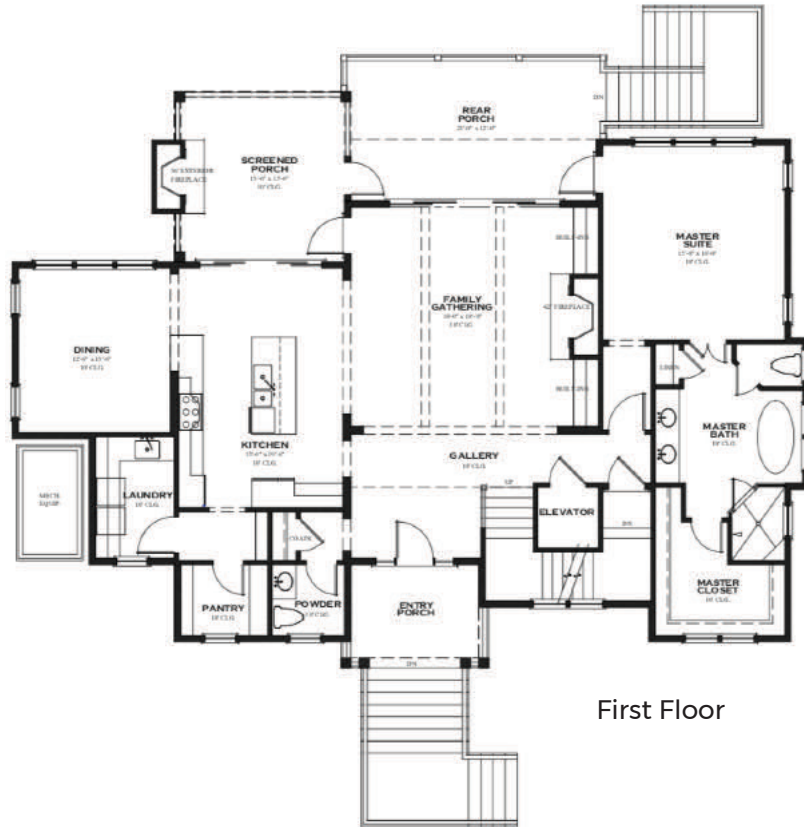
Phone: 910-763-8760 | info@pbcdesignbuild.com | www.pbcdesignbuild.com

PBC | DESIGN
+ BUILD

LOT 9 HELMS PORT



Ground Floor Entry



First Floor



Second Floor

4042 Square Feet

Ground Floor Heated: 299'
First Floor Heated: 2022'
Second Floor Heated: 1670'

This rendering is a general plan subject to future change + revisions. Dimensions, boundaries and position locations are for illustrative purposes only.