

THOM'S CREEK RIVER HOUSE

3748 Square Feet



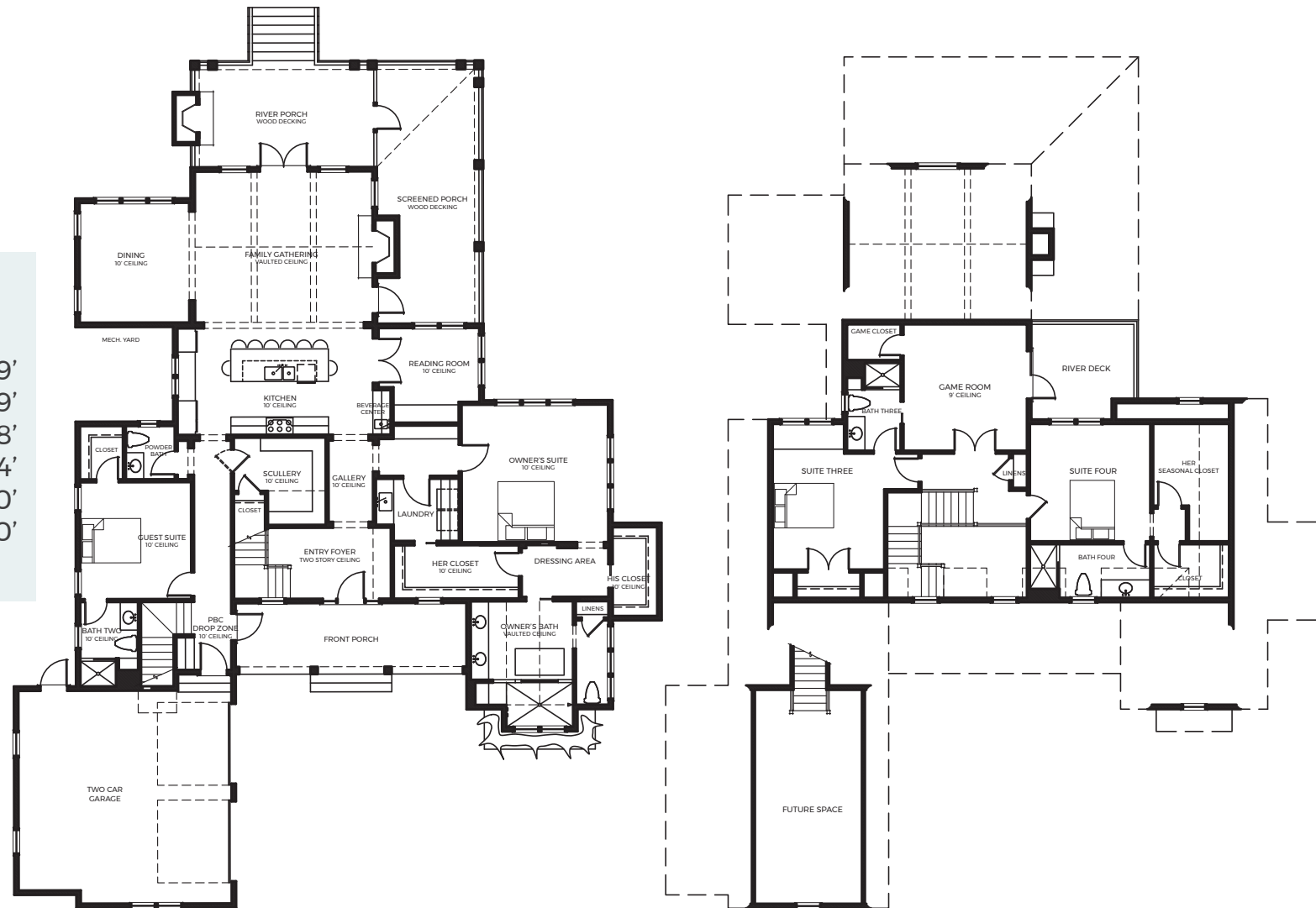
Phone: 910-763-8760 | info@pbcdesignbuild.com | www.pbcdesignbuild.com

PBC | DESIGN
+ BUILD

THOM'S CREEK RIVER HOUSE

3748 Square Feet

First Floor Heated: 2659'
Second Floor Heated: 1089'
Front Porch: 208'
Rear Porches: 584'
Garage: 640'
Future Space: 280'



This rendering is a general plan subject to future change + revisions. Dimensions, boundaries and position locations are for illustrative purposes only.